

About FxConnect™

FxConnect is an Enterprise development framework for Adobe Flex and Adobe AIR.

With many years of experience using Adobe Flex, we have seen many issues with current options for development frameworks. From organizations who don't allow open-source solutions to mostly issues with application consistency and size; AppFoundation has completed its own development framework built for developers.

FxConnect cuts down on more than **25%** of development required to deliver Flex and AIR applications. The goal of **FxConnect** is to simplify development of large scale rich Internet applications (RIAs). The result is a framework that allows your company to start developing features out-of-the-box instead of worrying about core architecture issues that **FxConnect** addresses.

Core Features

APPLICATION CONTEXT - Context for the application includes many variables such as user profile, initialization processing, data model instances, and other important handlers for the application. The application context is available globally to the application to remove the need to pass data throughout the application through events.

MODULE MANAGER - Our module manager allows you to logically partition the application into individual view modules. Effectively breaking the download of your application into small chunks that allows your views to be viewed on demand.

NAVIGATION - Navigation is a business object that you can extend to manage what view you are on. You can set up your modules here, as well as constants that our State Engine uses.

STYLE MANAGER - The Style Manager allows you to dynamically load styles into the application. You can quickly switch out styles where needed to meet branding requirements.

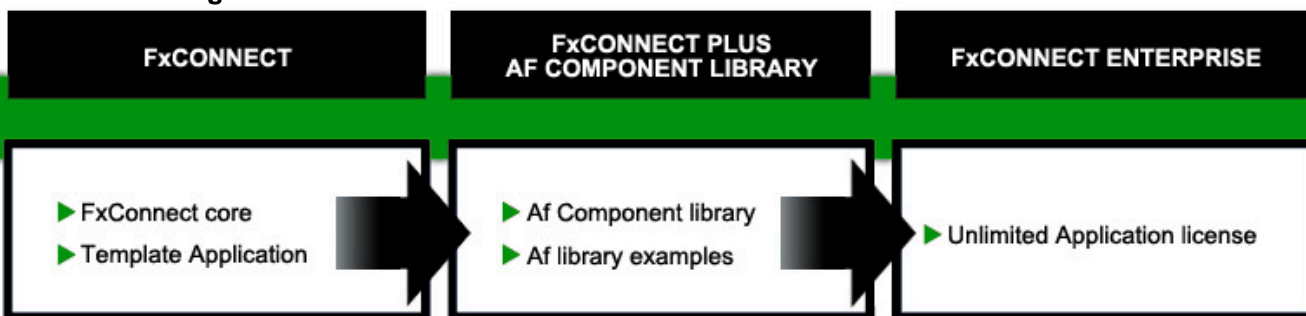
STATE ENGINE - This utility allows the definition of application states and the valid transition to which states are available. This allows you to keep your application in synch with data and views and keeps you out of invalid states.

RESOURCE MANAGER - This piece of the architecture is used to handle internationalization (i18n) and localization (l10n) details through the ResourceManager. You specify a default resource bundle by component or by application that allows you to define string names for button labels, text areas, etc.

TRANSPORT - We have taken a minimalistic approach to pair down the work associated with setting up a data service and subsequent calls. We use a proxy object to access transports. Transports are tied to services on your server and use a request/response model. This could be legacy or custom services built for the Flex application.

ERROR MANAGER - Error management allows you to capture and store errors from anywhere in the application as well as use its internal pop-ups to display error messages.

FxConnect Pricing

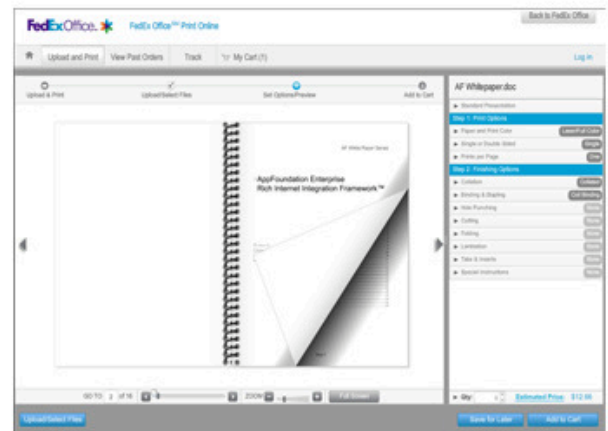


Contact AppFoundation

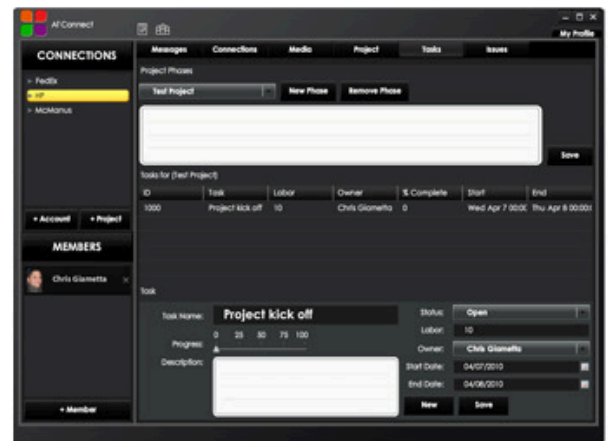
3941 Legacy Drive
Suite 204, #B217
Plano, TX 75023

Phone: 972-979-7848
Email: info@appfoundation.com

www.appfoundation.com
www.adobe.flex.appfoundation.com



Flex Enterprise ecommerce for **FedExOffice**.
<https://prntonline.fedex.com/nextgen/>



Desktop CMS built in Adobe AIR